

PPP2R1B Antibody (N-term)
Purified Rabbit Polyclonal Antibody (Pab)
Catalog # AP20940b

Specification

PPP2R1B Antibody (N-term) - Product Information

Application	WB,E
Primary Accession	P30154
Other Accession	Q4QQT4 , P54613 , Q7TNP2
Reactivity	Human, Mouse, Rat
Predicted	Pig
Host	Rabbit
Clonality	Polyclonal
Isotype	Rabbit IgG
Calculated MW	66214

PPP2R1B Antibody (N-term) - Additional Information

Gene ID 5519

Other Names

Serine/threonine-protein phosphatase 2A 65 kDa regulatory subunit A beta isoform, PP2A subunit A isoform PR65-beta, PP2A subunit A isoform R1-beta, PPP2R1B

Target/Specificity

This PPP2R1B antibody is generated from a rabbit immunized with a KLH conjugated synthetic peptide between 86-120 amino acids from the N-terminal region of human PPP2R1B.

Dilution

WB~~1:1000

E~~Use at an assay dependent concentration.

Format

Purified polyclonal antibody supplied in PBS with 0.09% (W/V) sodium azide. This antibody is purified through a protein A column, followed by peptide affinity purification.

Storage

Maintain refrigerated at 2-8°C for up to 2 weeks. For long term storage store at -20°C in small aliquots to prevent freeze-thaw cycles.

Precautions

PPP2R1B Antibody (N-term) is for research use only and not for use in diagnostic or therapeutic procedures.

PPP2R1B Antibody (N-term) - Protein Information

Name PPP2R1B

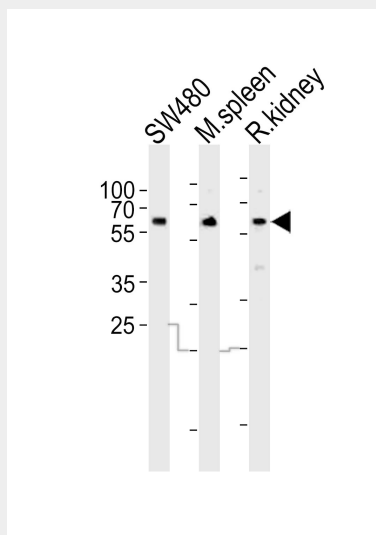
Function The PR65 subunit of protein phosphatase 2A serves as a scaffolding molecule to coordinate the assembly of the catalytic subunit and a variable regulatory B subunit.

PPP2R1B Antibody (N-term) - Protocols

Provided below are standard protocols that you may find useful for product applications.

- [Western Blot](#)
- [Blocking Peptides](#)
- [Dot Blot](#)
- [Immunohistochemistry](#)
- [Immunofluorescence](#)
- [Immunoprecipitation](#)
- [Flow Cytometry](#)
- [Cell Culture](#)

PPP2R1B Antibody (N-term) - Images



Western blot analysis of lysates from SW480 cell line mouse spleen, rat kidney tissue (from left to right), using PPP2R1B Antibody (N-term)(Cat. #AP20940b). AP20940b was diluted at 1:1000 at each lane. A goat anti-rabbit IgG H&L(HRP) at 1:10000 dilution was used as the secondary antibody. Lysates at 20ug per lane.

PPP2R1B Antibody (N-term) - Background

The PR65 subunit of protein phosphatase 2A serves as a scaffolding molecule to coordinate the assembly of the catalytic subunit and a variable regulatory B subunit.

PPP2R1B Antibody (N-term) - References

- Baysal B.E.,et al.Gene 217:107-116(1998).
Wang S.S.,et al.Science 282:284-287(1998).
Baysal B.E.,et al.Eur. J. Hum. Genet. 9:121-129(2001).
Ota T.,et al.Nat. Genet. 36:40-45(2004).
Taylor T.D.,et al.Nature 440:497-500(2006).